

Access Fixtures
40 Jackson St. Worcester, MA
01608 800.468.9925

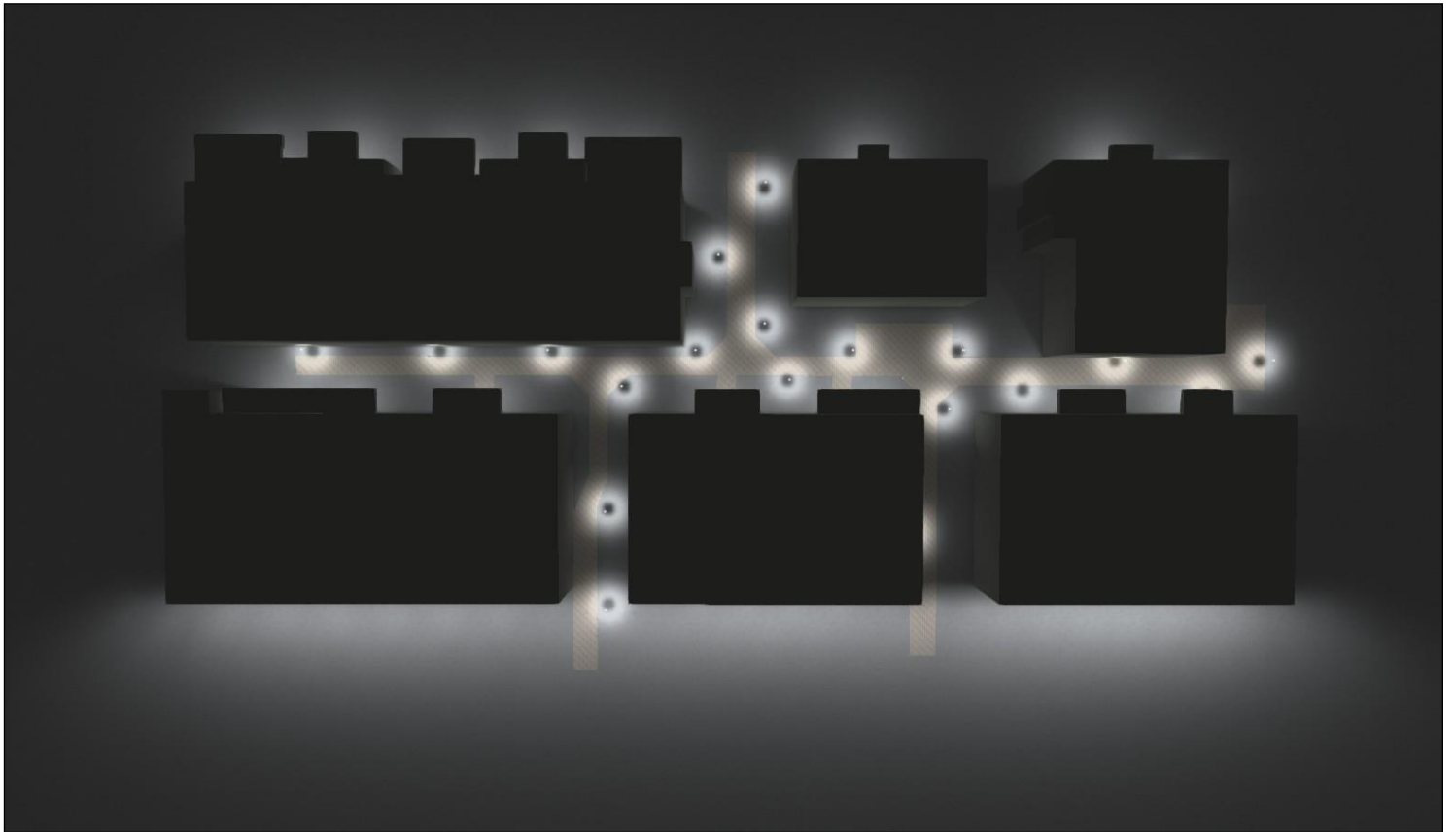
800-468-9925
Sales@AccessFixtures.com

This photometric report will be generated using methods recommended by the Illuminating Engineering Society of North America (IESNA). The calculations in this report will be based on data provided by a third party. The accuracy of this photometric report is dependent on the accuracy of the data provided. End-user environment and application (including, but not limited to voltage variation and dirt accumulation) can cause actual photometric performance to differ from the performance calculated using the data provided. This report will be provided without warranty as to accuracy, completeness, reliability, or otherwise. In no event will Access Fixtures be responsible for any loss resulting from any use of this report.

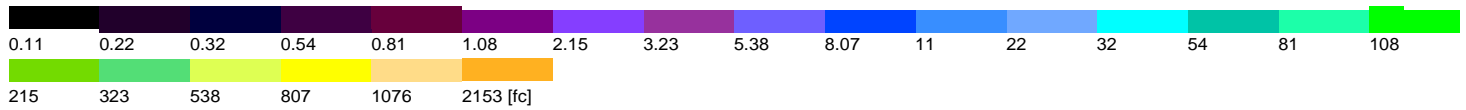
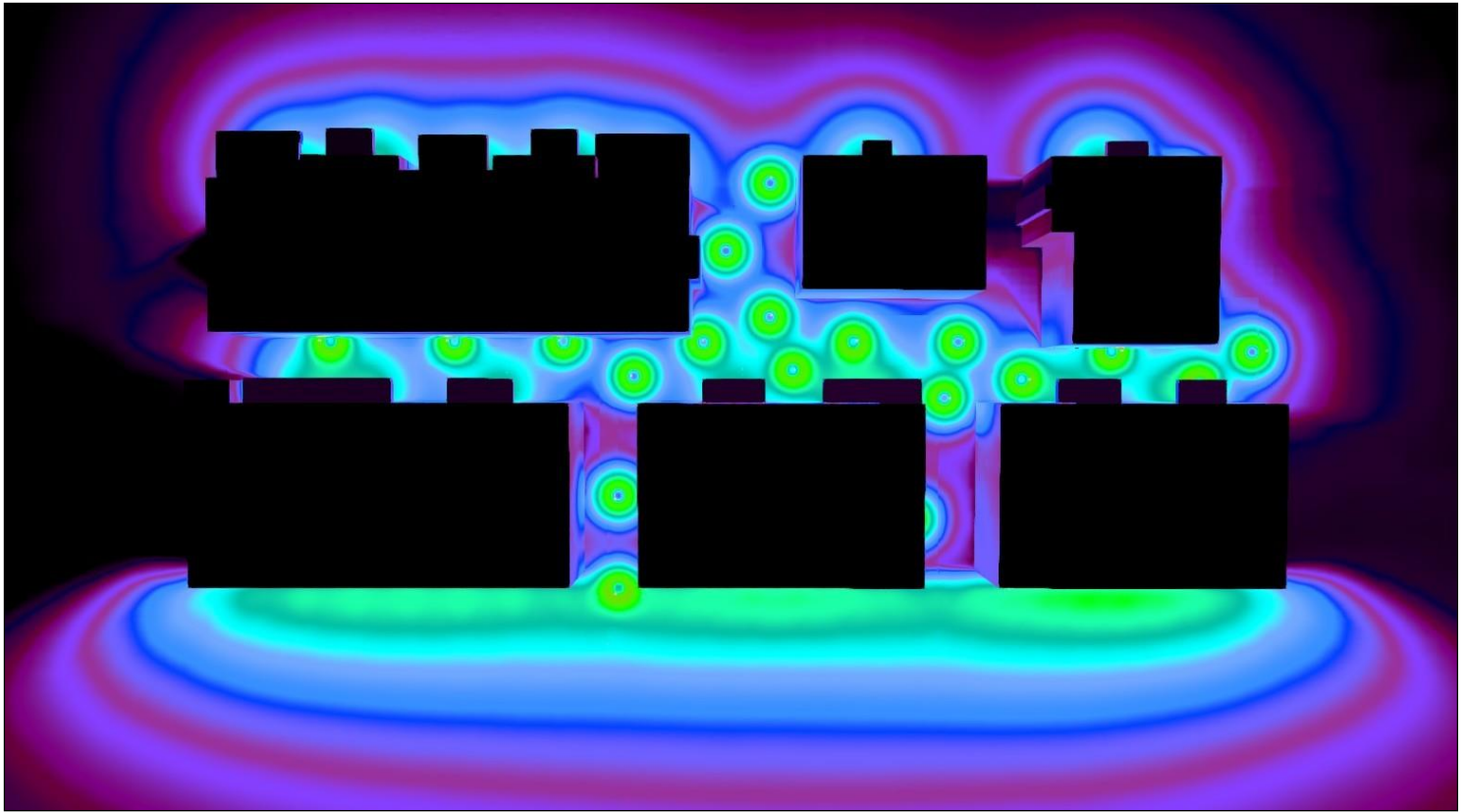
Table of contents

Views	3
AF33XWPC12QC1X22U5KC WPC12 with 22 watt LED array with Type III optics, clear glass lens 1x14 SAMSUNG 351Z LEDs	
Luminaire data sheet (1x14 SAMSUNG 351Z LEDs)	7
AF33XBORLQF1X15U5K BORL with 15 watt LED Array 1x42 SAMSUNG LH351Z LEDs	
Luminaire data sheet (1x42 SAMSUNG LH351Z LEDs)	10
AF33XWPR22OFQF1X23U5KO WPR22OF with 23 watt LED Array 1x66 SAMSUNG 561B LEDs	
Luminaire data sheet (1x66 SAMSUNG 561B LEDs)	13
Site 1	
Parking area #1	
Results overview	16
False colors / Perpendicular illuminance	17
Value chart / Perpendicular illuminance	18
Value chart / Vertical illuminance	19
Parking area #2	
Results overview	20
False colors / Perpendicular illuminance	21
Value chart / Perpendicular illuminance	22
Value chart / Vertical illuminance	23
Parking area #3	
Results overview	24
False colors / Perpendicular illuminance	25
Value chart / Perpendicular illuminance	26
Value chart / Vertical illuminance	27
Walkway	
Results overview	28
False colors / Perpendicular illuminance	29
Value chart / Perpendicular illuminance	30
Value chart / Vertical illuminance	31

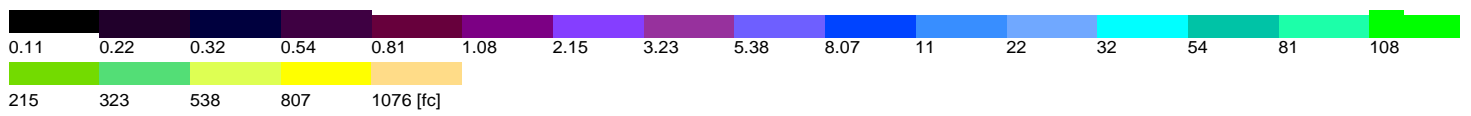
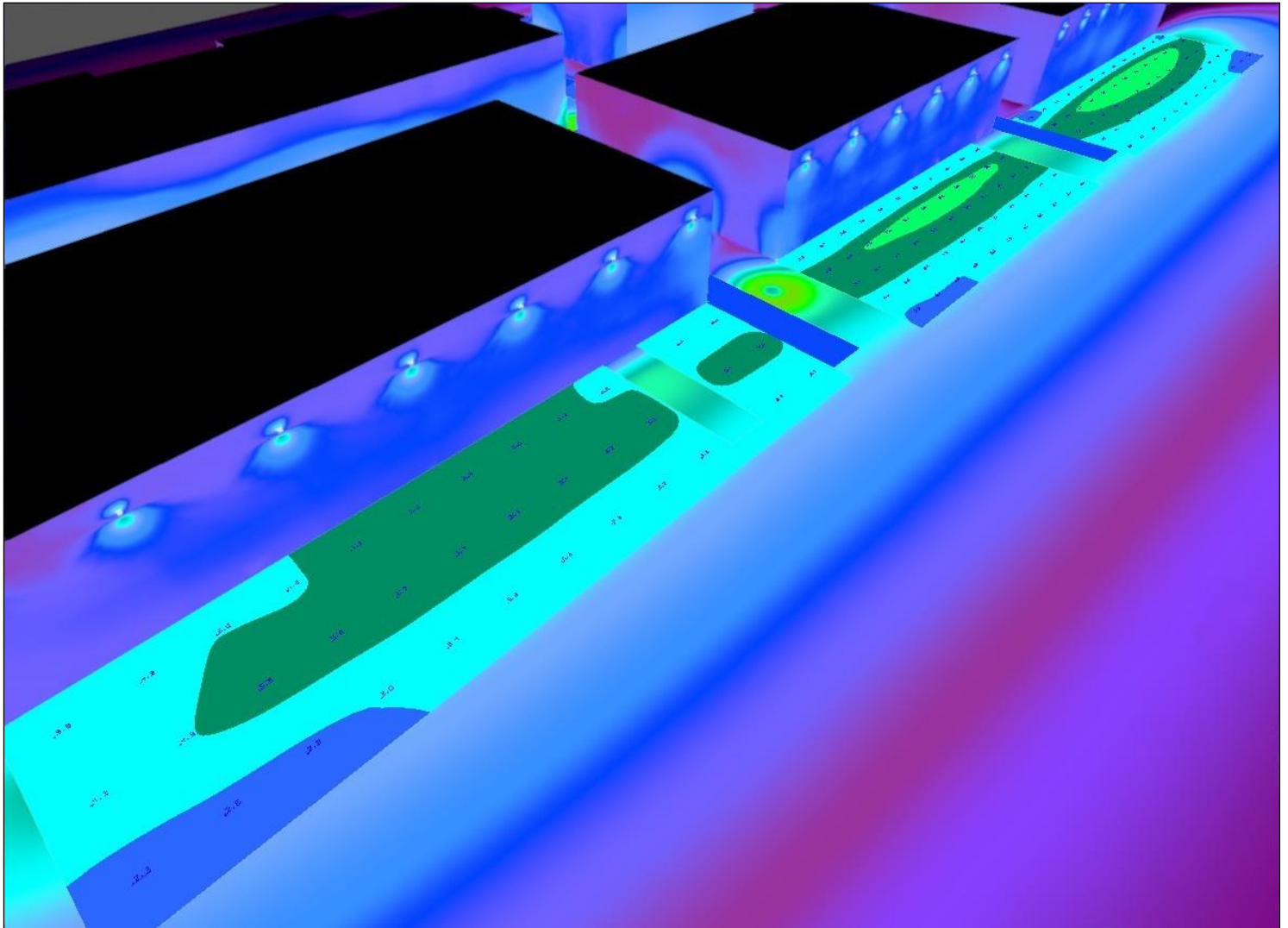
Top view



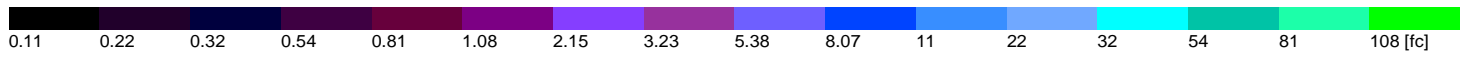
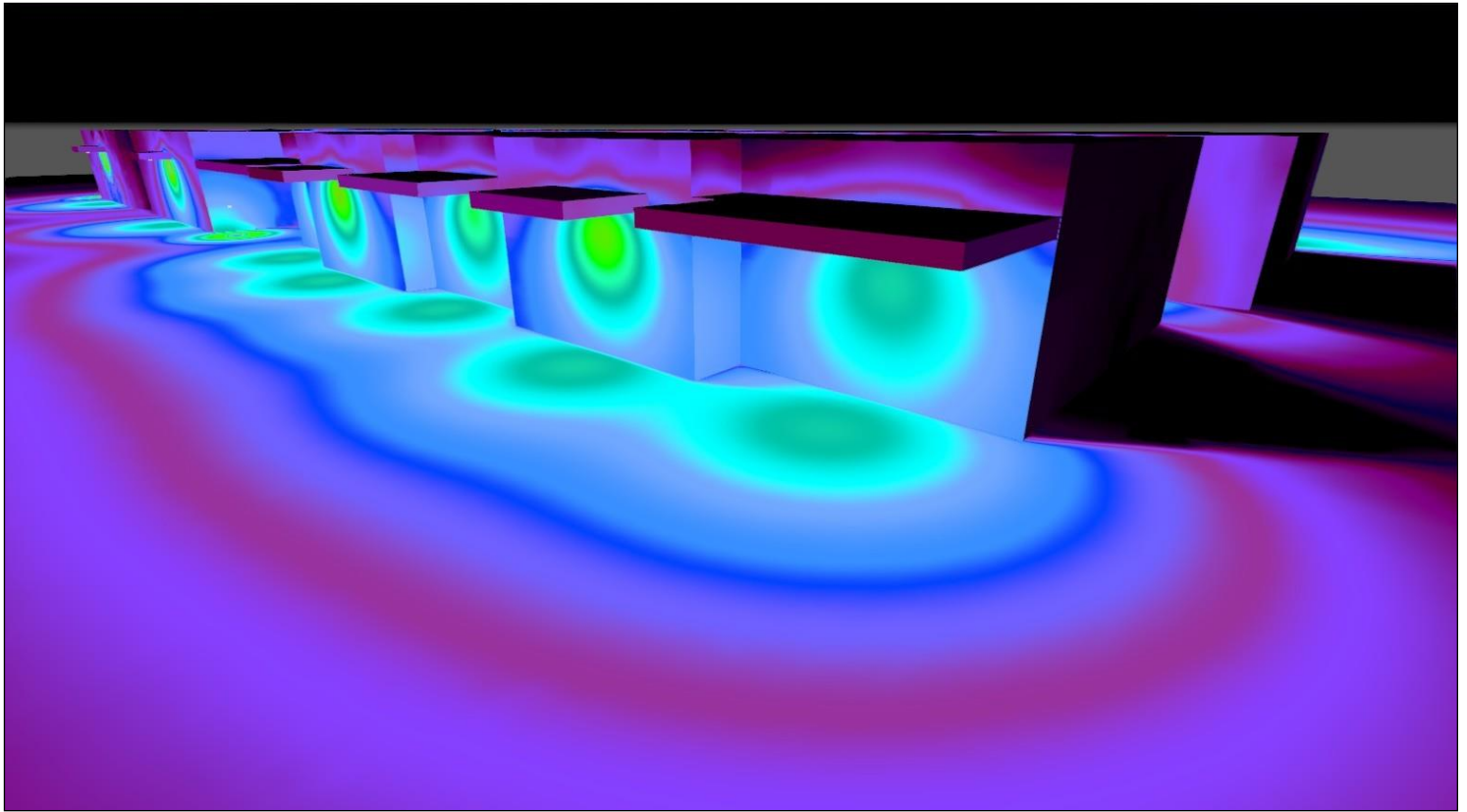
Top view (false colors), Illuminance values in [fc]



Parking lot, Illuminance values in [fc]



View 1, Illuminance values in [fc]

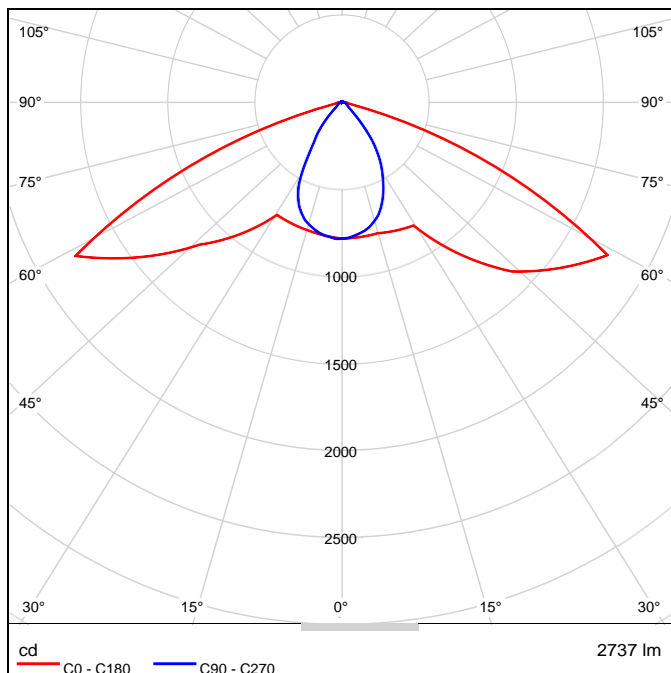


AF33XWPC12QC1X22U5KC WPC12 with 22 watt LED array with Type III optics, clear glass lens 1x14 SAMSUNG 351Z LEDs

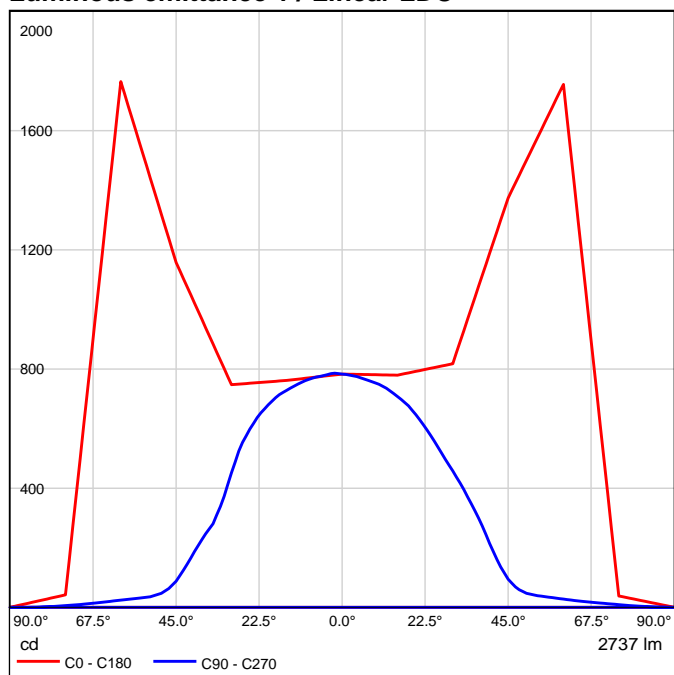
See our luminaire catalog for an image of the luminaire.

Light output ratio: 75.53%
Lamp luminous flux: 2737 lm
Luminaire Luminous Flux: 2067 lm
Power: 24.8 W
Light yield: 83.4 lm/W
Color temperature: 3000 K
Color rendering index: 100

Luminous emittance 1 / Polar LDC

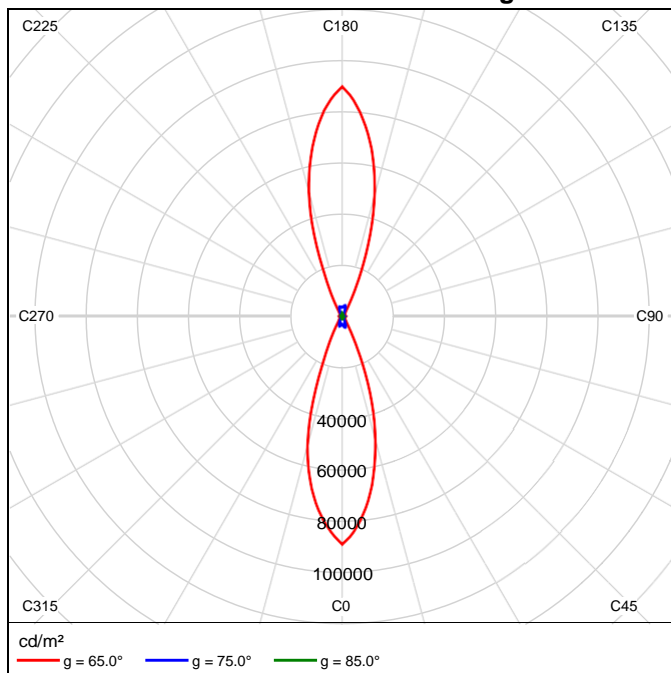


Luminous emittance 1 / Linear LDC



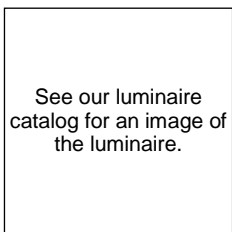
It is not possible to generate a cone diagram, as the light distribution is asymmetrical.

Luminous emittance 1 / Luminance diagram



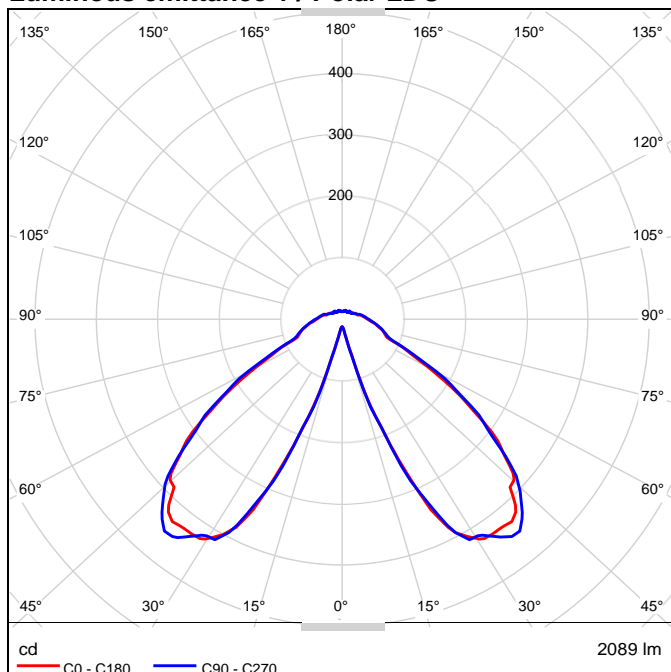
It is not possible to generate a UGR diagram, as the light distribution is asymmetrical.

AF33XBORLQF1X15U5K BORL with 15 watt LED Array 1x42 SAMSUNG LH351Z LEDs

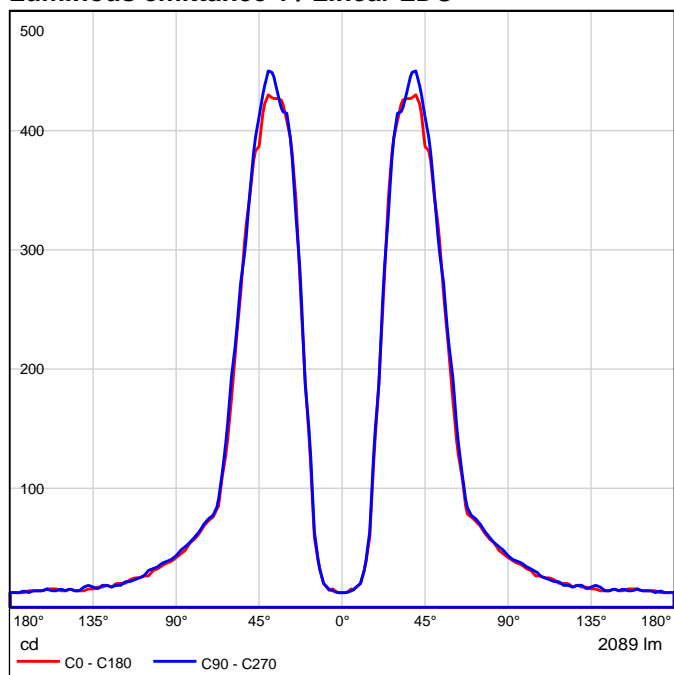


Light output ratio: 66.27%
Lamp luminous flux: 2089 lm
Luminaire Luminous Flux: 1384 lm
Power: 17.3 W
Light yield: 80.0 lm/W
Color temperature: 3000 K
Color rendering index: 100

Luminous emittance 1 / Polar LDC

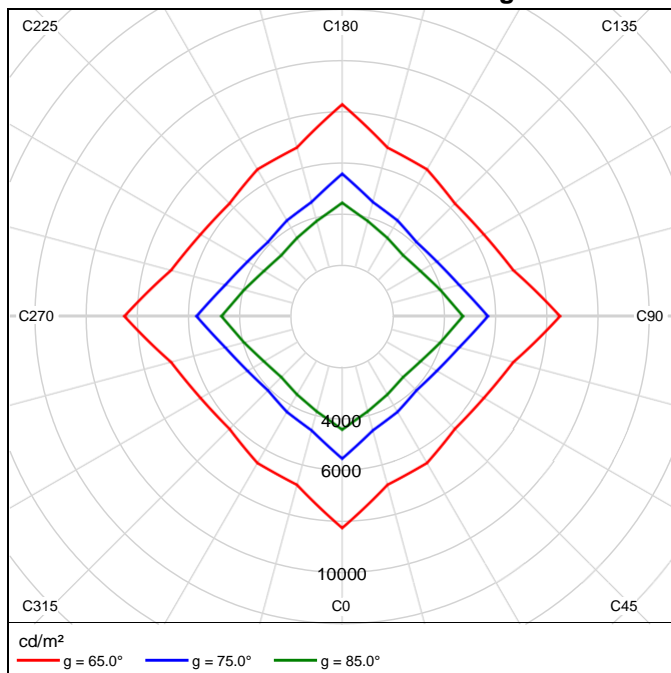


Luminous emittance 1 / Linear LDC



It is not possible to generate a cone diagram, as the light distribution is asymmetrical.

Luminous emittance 1 / Luminance diagram



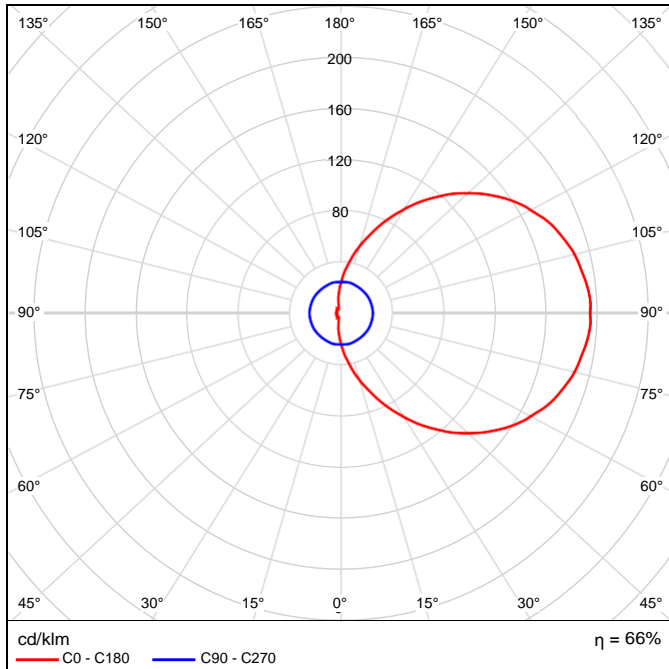
It is not possible to generate a UGR diagram, as the light distribution is asymmetrical.

AF33XWPR22OFQF1X23U5KO WPR22OF with 23 watt LED Array 1x66 SAMSUNG 561B LEDs

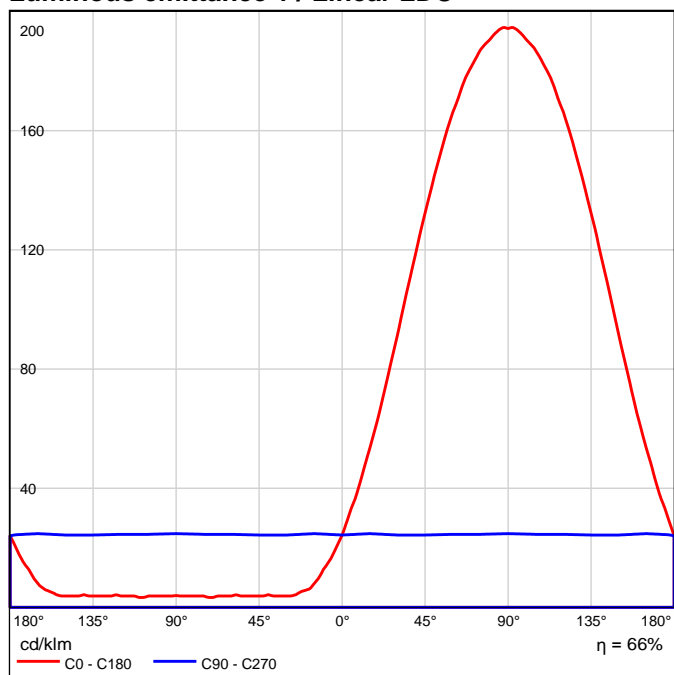
See our luminaire catalog for an image of the luminaire.

Light output ratio: 66.08%
Lamp luminous flux: 3249 lm
Luminaire Luminous Flux: 2147 lm
Power: 27.1 W
Light yield: 79.2 lm/W
Color temperature: 3000 K
Color rendering index: 100

Luminous emittance 1 / Polar LDC

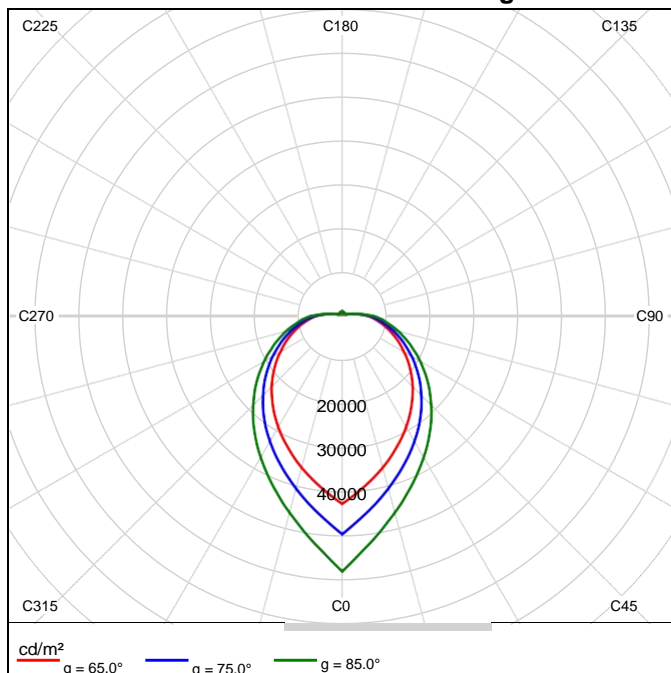


Luminous emittance 1 / Linear LDC



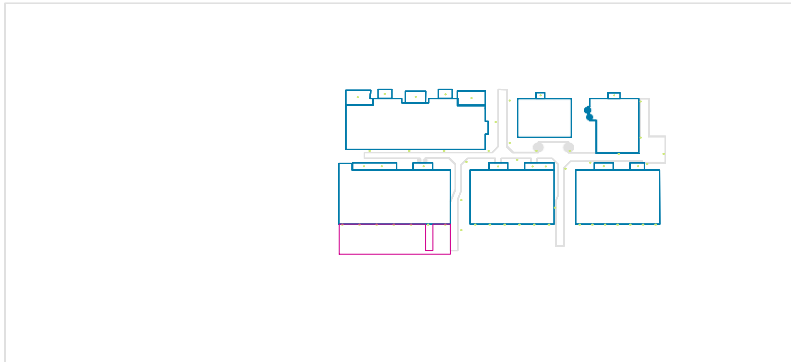
It is not possible to generate a cone diagram, as the light distribution is asymmetrical.

Luminous emittance 1 / Luminance diagram



It is not possible to generate a UGR diagram, as the light distribution is asymmetrical.

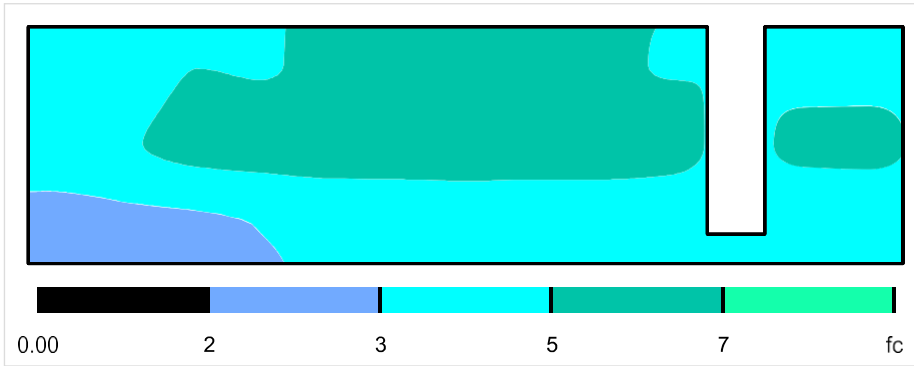
Parking area #1



Result	Mean (target)	Min	Max	Min/average	Min/max
Perpendicular illuminance [fc]	4.5	2.3	6.3	0.50	0.36
Vertical illuminance [fc]	0.18	0.06	0.33	0.37	0.20
Rotation: -90.0°, Height offset: 17.000 ft					

Profile: General circulation areas at outdoor workplaces, Pedestrian passages, vehicle turning, loading and unloading points

Parking area #1

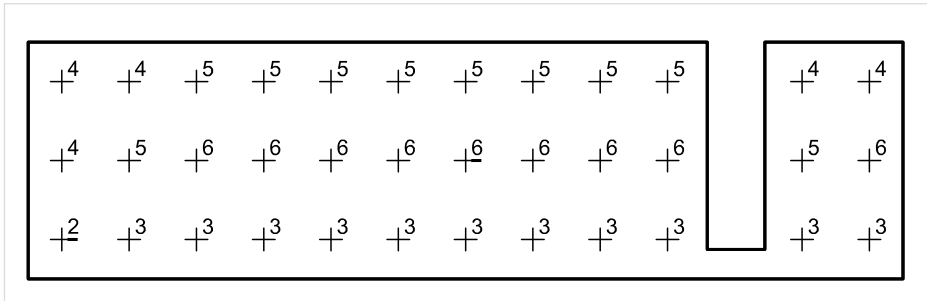


Scale: 1 : 200

Perpendicular illuminance (Grid)

Mean (actual): 4.5 fc, Min: 2.3 fc, Max: 6.3 fc, Min/average: 0.50, Min/max: 0.36

Parking area #1

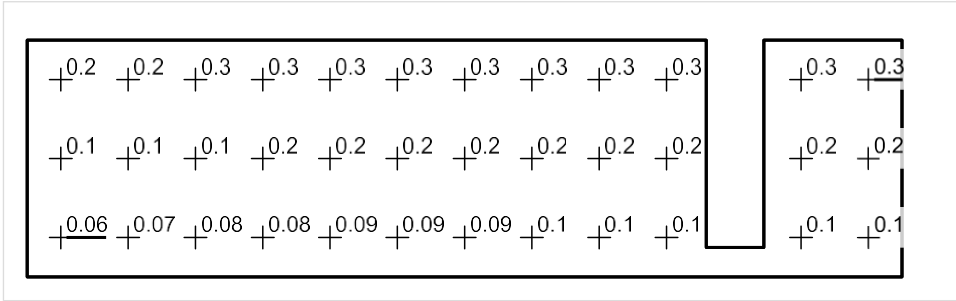


Scale: 1 : 200

Perpendicular illuminance (Grid)

Mean (actual): 4.5 fc, Min: 2.3 fc, Max: 6.3 fc, Min/average: 0.50, Min/max: 0.36

Parking area #1

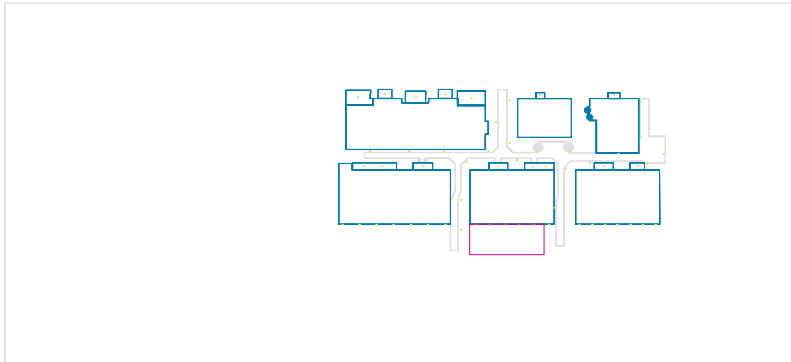


Scale: 1 : 200

Vertical illuminance (Grid)

Mean (actual): 0.18 fc, Min: 0.06 fc, Max: 0.33 fc, Min/average: 0.37, Min/max: 0.20
Rotation: -90.0°, Height offset: 17.000 ft

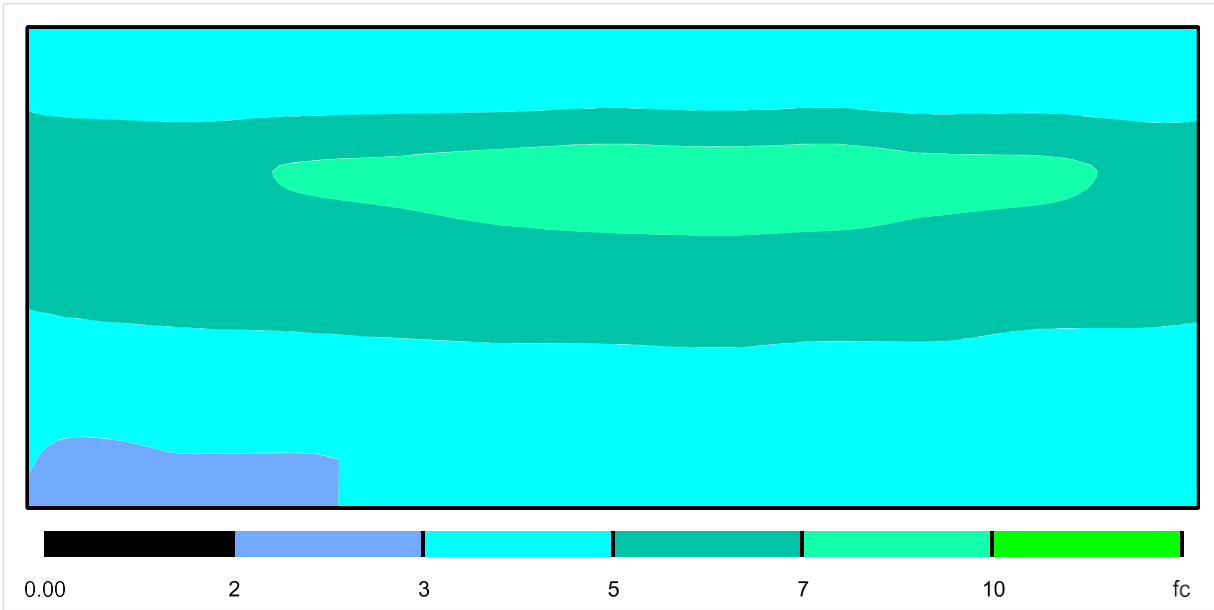
Parking area #2



Result	Mean (target)	Min	Max	Min/average	Min/max
Perpendicular illuminance [fc]	5.0	2.9	8.4	0.57	0.34
Vertical illuminance [fc]	0.21	0.09	0.38	0.43	0.24
Rotation: -90.0°, Height offset: 17.000 ft					

Profile: General circulation areas at outdoor workplaces, Pedestrian passages, vehicle turning, loading and unloading points

Parking area #2

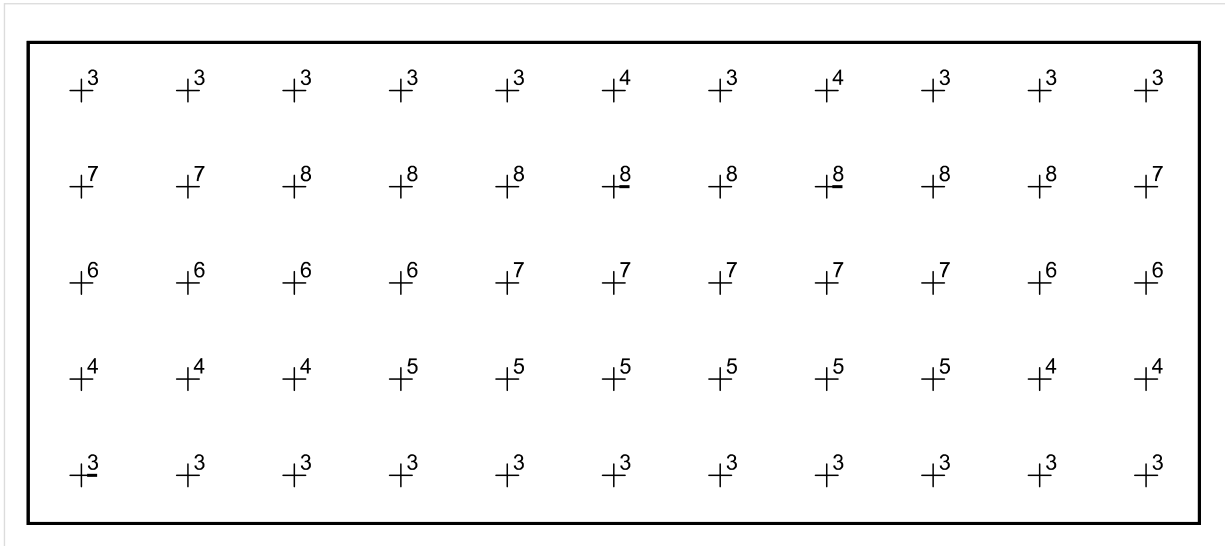


Scale: 1 : 100

Perpendicular illuminance (Grid)

Mean (actual): 5.0 fc, Min: 2.9 fc, Max: 8.4 fc, Min/average: 0.57, Min/max: 0.34

Parking area #2

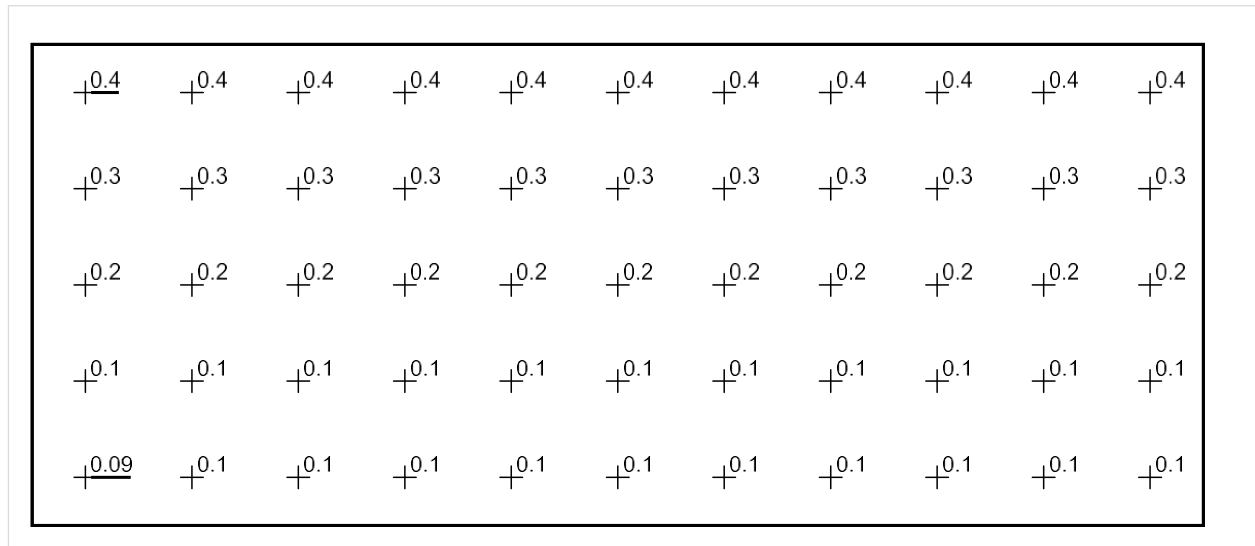


Scale: 1 : 100

Perpendicular illuminance (Grid)

Mean (actual): 5.0 fc, Min: 2.9 fc, Max: 8.4 fc, Min/average: 0.57, Min/max: 0.34

Parking area #2



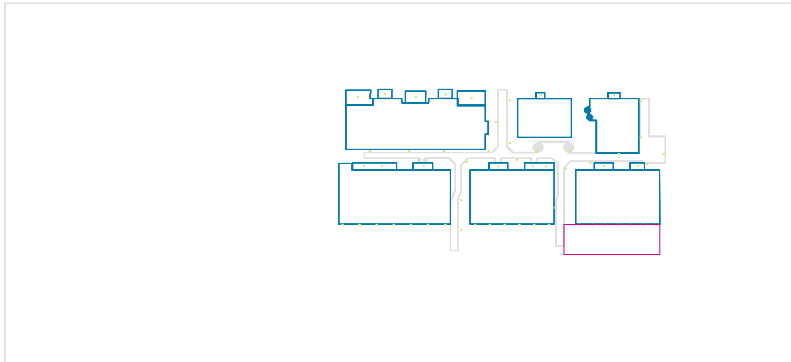
Scale: 1 : 100

Vertical illuminance (Grid)

Mean (actual): 0.21 fc, Min: 0.09 fc, Max: 0.38 fc, Min/average: 0.43, Min/max: 0.24

Rotation: -90.0°, Height offset: 17.000 ft

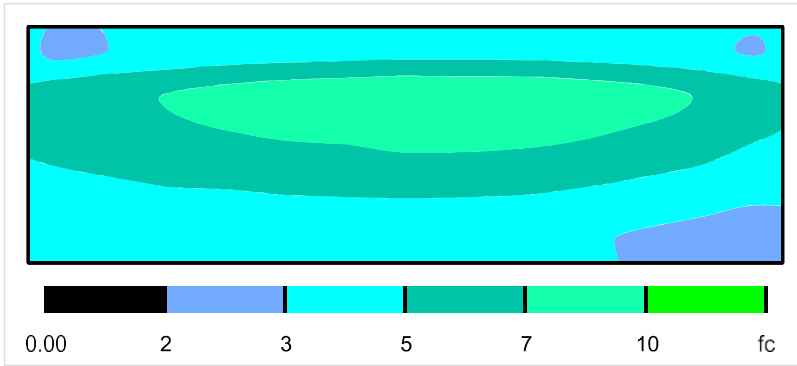
Parking area #3



Result	Mean (target)	Min	Max	Min/average	Min/max
Perpendicular illuminance [fc]	5.3	2.3	9.83	0.43	0.23
Vertical illuminance [fc]	0.20	0.07	0.39	0.32	0.17
Rotation: -90.0°, Height offset: 17.000 ft					

Profile: General circulation areas at outdoor workplaces, Pedestrian passages, vehicle turning, loading and unloading points

Parking area #3

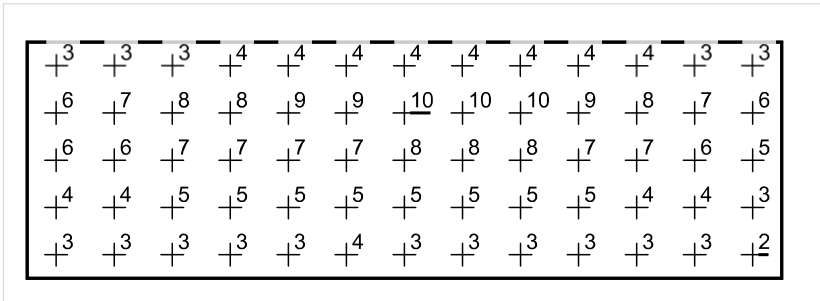


Scale: 1 : 200

Perpendicular illuminance (Grid)

Mean (actual): 5.3 fc, Min: 2.3 fc, Max: 9.83 fc, Min/average: 0.43, Min/max: 0.23

Parking area #3

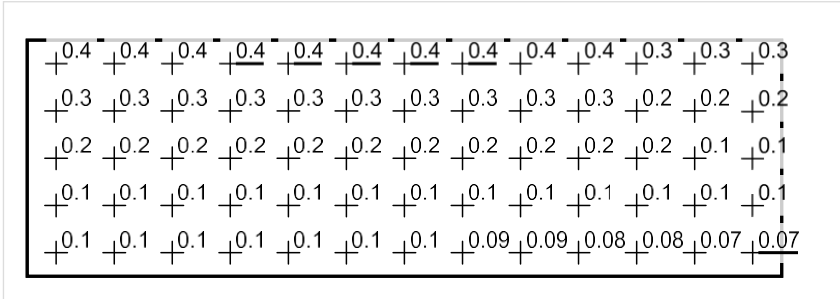


Scale: 1 : 200

Perpendicular illuminance (Grid)

Mean (actual): 5.3 fc, Min: 2.3 fc, Max: 9.83 fc, Min/average: 0.43, Min/max: 0.23

Parking area #3

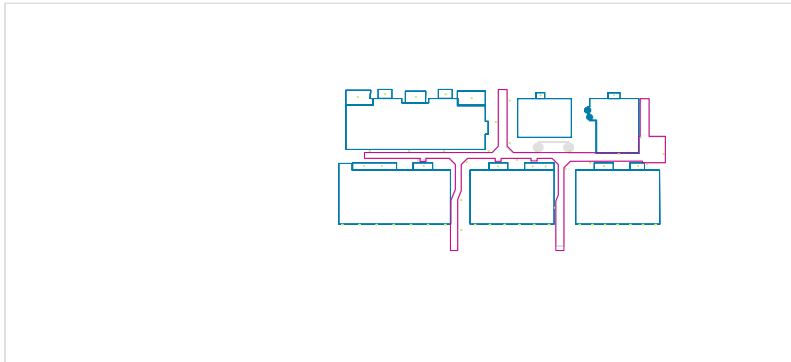


Scale: 1 : 200

Vertical illuminance (Grid)

Mean (actual): 0.20 fc, Min: 0.07 fc, Max: 0.39 fc, Min/average: 0.32, Min/max: 0.17
Rotation: -90.0°, Height offset: 17.000 ft

Walkway

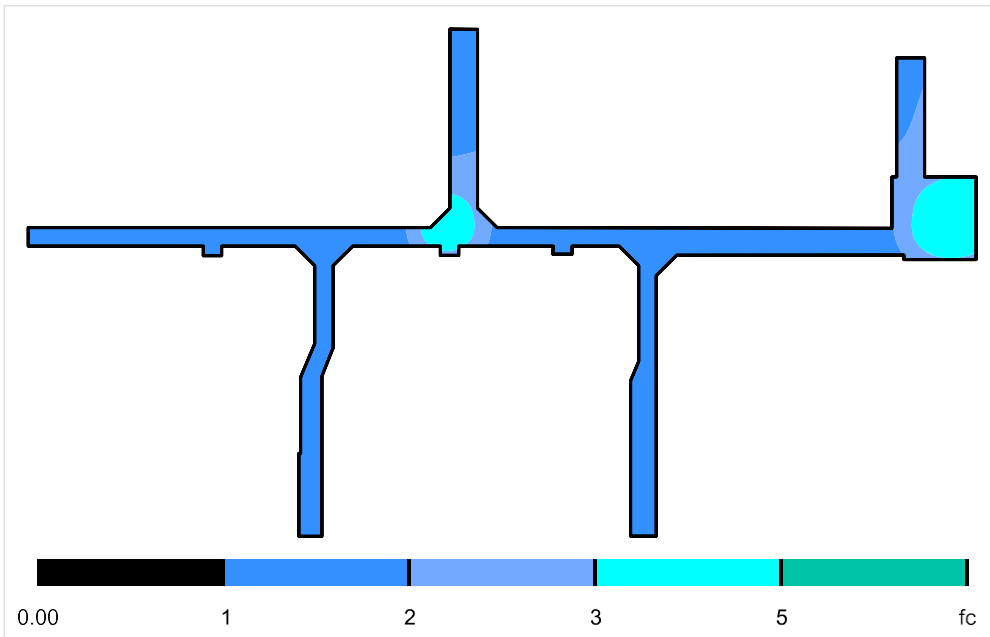


Result	Mean (target)	Min	Max	Min/average	Min/max
Perpendicular illuminance [fc]	3.6	2.0	4.8	0.54	0.41
Vertical illuminance [fc]	0.83	0.51	1.3	0.62	0.40

Rotation: 0.0°, Height offset: 9.220 ft

Profile: General circulation areas at outdoor workplaces, Pedestrian passages, vehicle turning, loading and unloading points

Walkway

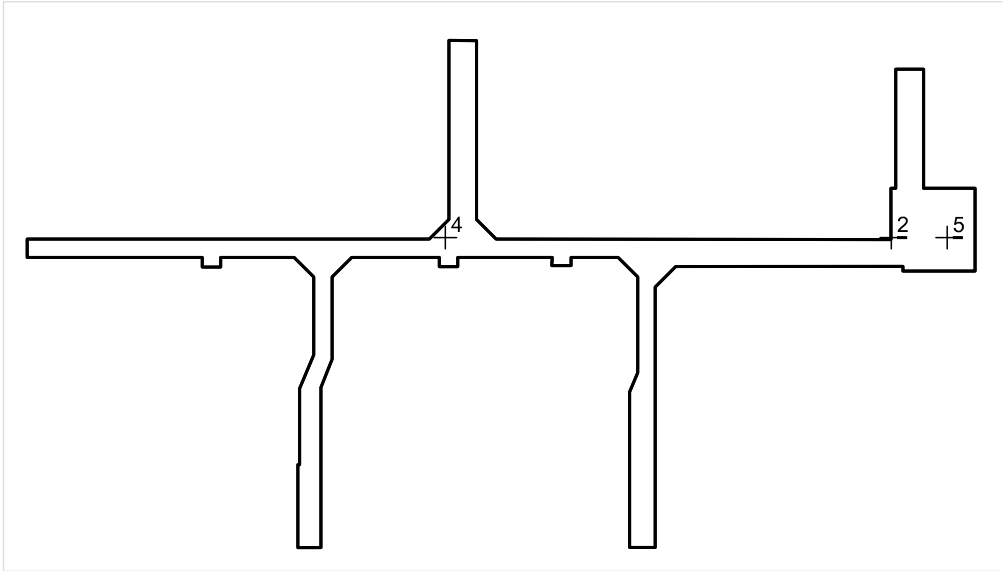


Scale: 1 : 500

Perpendicular illuminance (Grid)

Mean (actual): 3.6 fc, Min: 2.0 fc, Max: 4.8 fc, Min/average: 0.54, Min/max: 0.41

Walkway

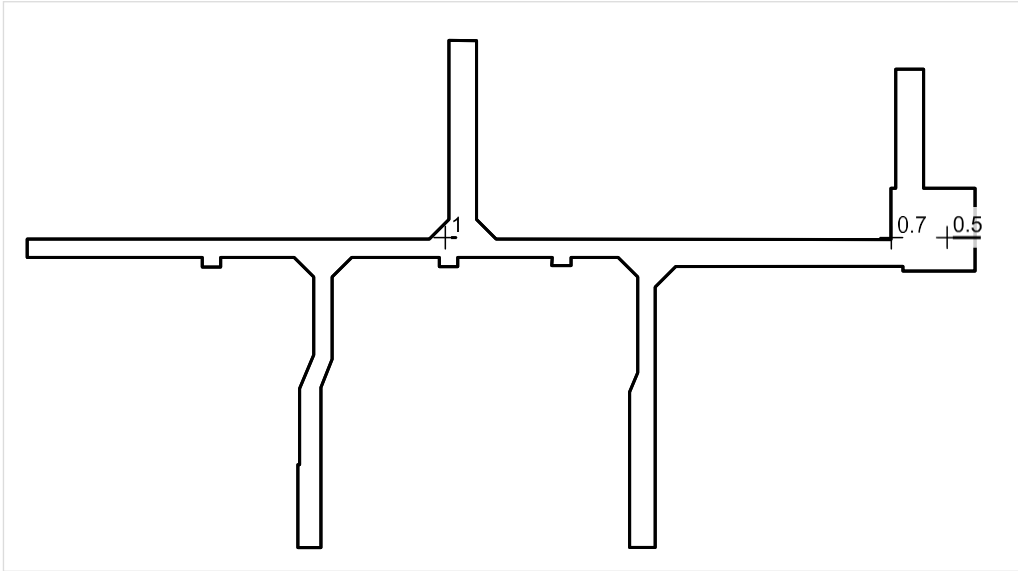


Scale: 1 : 500

Perpendicular illuminance (Grid)

Mean (actual): 3.6 fc, Min: 2.0 fc, Max: 4.8 fc, Min/average: 0.54, Min/max: 0.41

Walkway



Scale: 1 : 500

Vertical illuminance (Grid)

Mean (actual): 0.83 fc, Min: 0.51 fc, Max: 1.3 fc, Min/average: 0.62, Min/max: 0.40

Rotation: 0.0°, Height offset: 9.220 ft