

This photometric report will be generated using methods recommended by the Illuminating Engineering Society of North America (IESNA). The Calculations in this report will be based on data provided by a third party. The accuracy of this photometric report is dependent on the accuracy of the data provided. Enduser environment and application (including, but not limited to voltage variation and dirt accumulation) can cause actual photometric performance to differ from the performance calculated using the data provided. This report will be provided without warranty as to accuracy, completeness, reliability, or otherwise. In no event will Access Fixtures be responsible for any loss resulting from any use of this report.

Access Fixtures
 40 Jackson St. Worcester, MA

Operator Access Fixtures
 Telephone 800-468-9925
 Fax
 e-Mail Sales@AccessFixtures.com

Table of contents

Pool

Project Cover	1
Table of contents	2
Luminaire parts list	3
Pool	
Planning data	4
Luminaires (layout plan)	5
Sport Luminaires (Coordinates List)	6
3D Rendering	8
False Color Rendering	9
Exterior Surfaces	
Calculation surface. Light trespass	
Surface 1	
Value Chart (E)	10
Illuminance level whole area	
Isolines (E, Perpendicular)	11
Value Chart (E, Perpendicular)	12
Illuminance level only pool	
Isolines (E, Perpendicular)	13
Value Chart (E, Perpendicular)	14

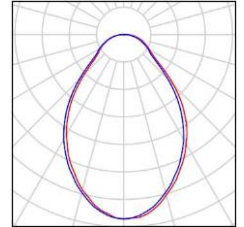
Access Fixtures
40 Jackson St. Worcester, MA

Operator Access Fixtures
Telephone 800-468-9925
Fax
e-Mail Sales@AccessFixtures.com

Pool / Luminaire parts list

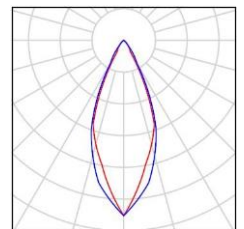
8 Pieces AF88XHEX252BFLXXL (80-degree)
Luminous flux (Luminaire): 45951 lm
Luminous flux (Lamps): 45951 lm
Luminaire Wattage: 441.0 W
Luminaire classification according to CIE: 100
CIE flux code: 63 86 96 100 100
Fitting: 1 x User defined (Correction Factor 1.000).

See our luminaire catalog for an image of the luminaire.



10 Pieces AF88XHEX252BFLXXL (40-degree)
Luminous flux (Luminaire): 50723 lm
Luminous flux (Lamps): 50723 lm
Luminaire Wattage: 378.0 W
Luminaire classification according to CIE: 100
CIE flux code: 97 100 100 100 102
Fitting: 1 x User defined (Correction Factor 1.000).

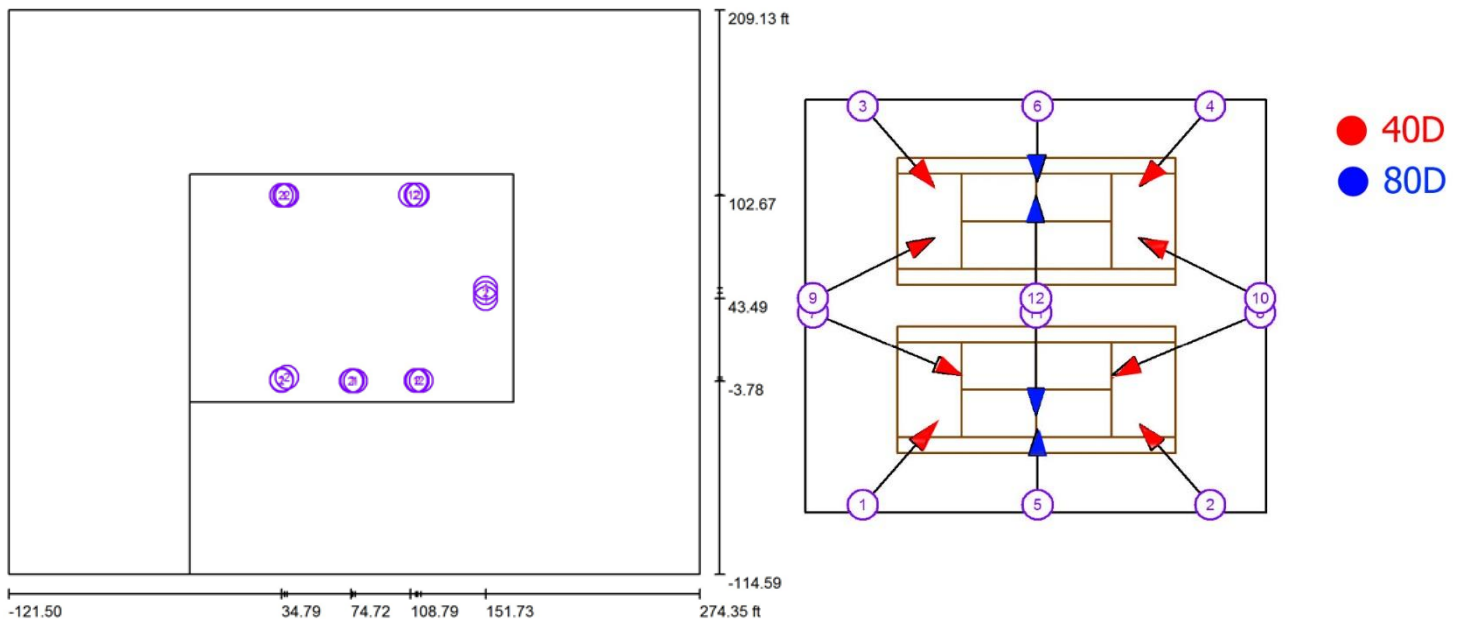
See our luminaire catalog for an image of the luminaire.



Access Fixtures
40 Jackson St. Worcester, MA

Operator Access Fixtures
Telephone 800-468-9925
Fax
e-Mail Sales@AccessFixtures.com

Pool / Planning data



Light loss factor: 0.80, ULR (Upward Light Ratio): 18.5%

Scale 1:915

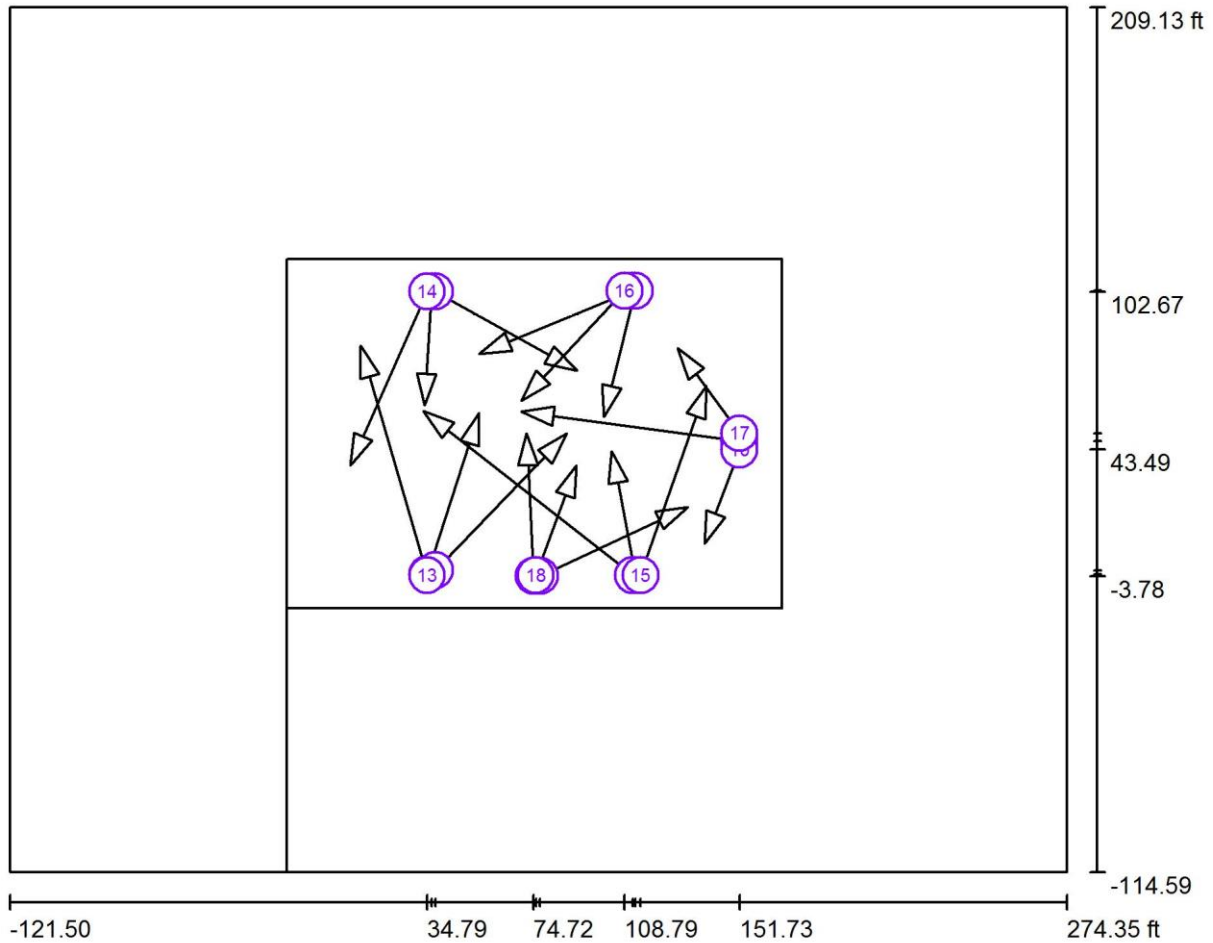
Luminaire Parts List

No.	Pieces	Designation (Correction Factor)	Φ (Luminaire) [lm]	Φ (Lamps) [lm]	P [W]
1	8	AF88XHEX252BFLXXL (80-degree) (1.000)	45951	45951	441.0
2	10	AF88XHEX252BFLXXL (40-degree) (1.000)	50723	50723	378.0
Total:			874841	Total: 874841	7_

Access Fixtures
40 Jackson St. Worcester, MA

Operator Access Fixtures
Telephone 800-468-9925
Fax
e-Mail Sales@AccessFixtures.com

Pool / Sport Luminaires (Coordinates List)



Scale 1 : 863

List of the Sport Luminaires

Luminaire	Index	Position [ft]			Aiming Point [ft]			Angle [°]	Alignment	Pole
		X	Y	Z	X	Y	Z			
AF88XHEX252BFLXXL (80-degree)	1	34.851	-3.049	20.000	54.301	57.197	0.000	17.5	(C 90, G IMax)	/
AF88XHEX252BFLXXL (40-degree)	2	37.930	-1.619	20.000	87.145	49.480	0.000	15.7	(C 90, G IMax)	/
AF88XHEX252BFLXXL (40-degree)	3	112.751	-3.437	20.000	104.001	42.978	0.000	22.9	(C 90, G IMax)	/
AF88XHEX252BFLXXL (80-degree)	4	111.751	-3.437	20.000	33.238	58.034	0.000	11.3	(C 90, G IMax)	/

Access Fixtures
 40 Jackson St. Worcester, MA

 Operator Access Fixtures
 Telephone 800-468-9925
 Fax
 e-Mail Sales@AccessFixtures.com

Pool / Sport Luminaires (Coordinates List)

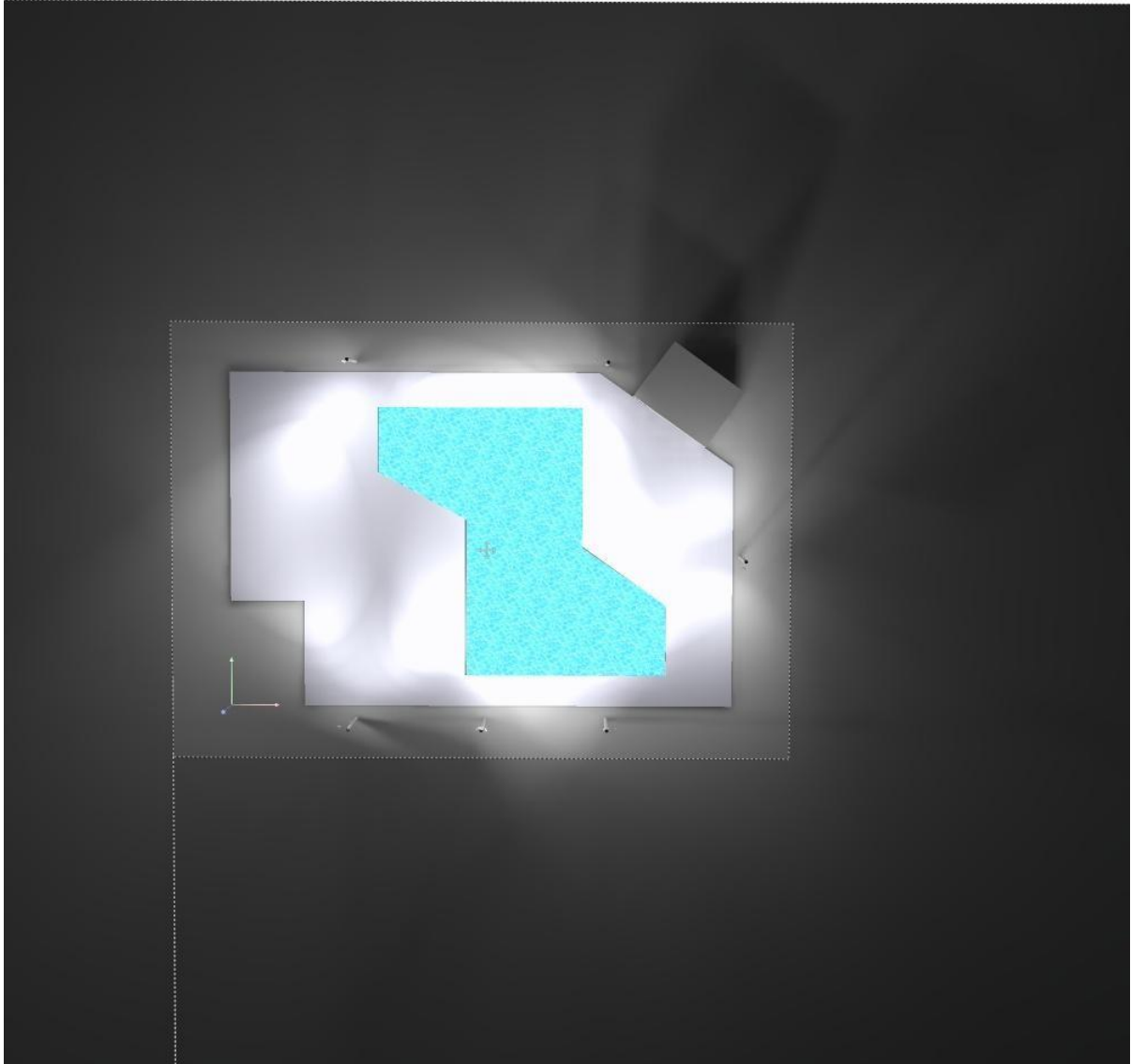
List of the Sport Luminaires

Luminaire	Index	Position [ft]			Aiming Point [ft]			Angle [°]	Alignment	Pole
		X	Y	Z	X	Y	Z			
AF88XHEX252BFLXXL (80-degree)	5	36.525	102.673	20.000	33.759	60.114	0.000	25.1	(C 90, G IMax)	/
AF88XHEX252BFLXXL (40-degree)	6	37.837	102.673	20.000	90.878	73.162	0.000	18.2	(C 90, G IMax)	/
AF88XHEX252BFLXXL (40-degree)	7	111.751	103.008	20.000	54.301	79.274	0.000	17.8	(C 90, G IMax)	/
AF88XHEX252BFLXXL (40-degree)	8	112.751	103.008	20.000	101.049	55.774	0.000	22.3	(C 90, G IMax)	/
AF88XHEX252BFLXXL (80-degree)	9	151.729	46.746	20.000	70.173	57.745	0.000	13.7	(C 90, G IMax)	/
AF88XHEX252BFLXXL (40-degree)	10	151.729	43.494	20.000	138.738	8.369	0.000	28.1	(C 90, G IMax)	/
AF88XHEX252BFLXXL (80-degree)	11	77.099	-3.776	20.000	132.446	22.129	0.000	18.1	(C 90, G IMax)	/
AF88XHEX252BFLXXL (40-degree)	12	74.720	-3.719	20.000	71.997	49.583	0.000	20.5	(C 90, G IMax)	/
AF88XHEX252BFLXXL (40-degree)	13	34.793	-3.437	20.000	9.957	82.387	0.000	12.6	(C 90, G IMax)	/
AF88XHEX252BFLXXL (40-degree)	14	34.793	102.673	20.000	6.069	37.591	0.000	15.7	(C 90, G IMax)	/
AF88XHEX252BFLXXL (40-degree)	15	114.715	-3.437	20.000	139.427	67.227	0.000	15.0	(C 90, G IMax)	/
AF88XHEX252BFLXXL (80-degree)	16	108.794	103.008	20.000	69.989	61.942	0.000	19.5	(C 90, G IMax)	/
AF88XHEX252BFLXXL (80-degree)	17	151.729	49.583	20.000	128.525	81.518	0.000	26.9	(C 90, G IMax)	/
AF88XHEX252BFLXXL (80-degree)	18	75.500	-3.437	20.000	90.573	37.680	0.000	24.5	(C 90, G IMax)	/

Access Fixtures
40 Jackson St. Worcester, MA

Operator Access Fixtures
Telephone 800-468-9925
Fax
e-Mail Sales@AccessFixtures.com

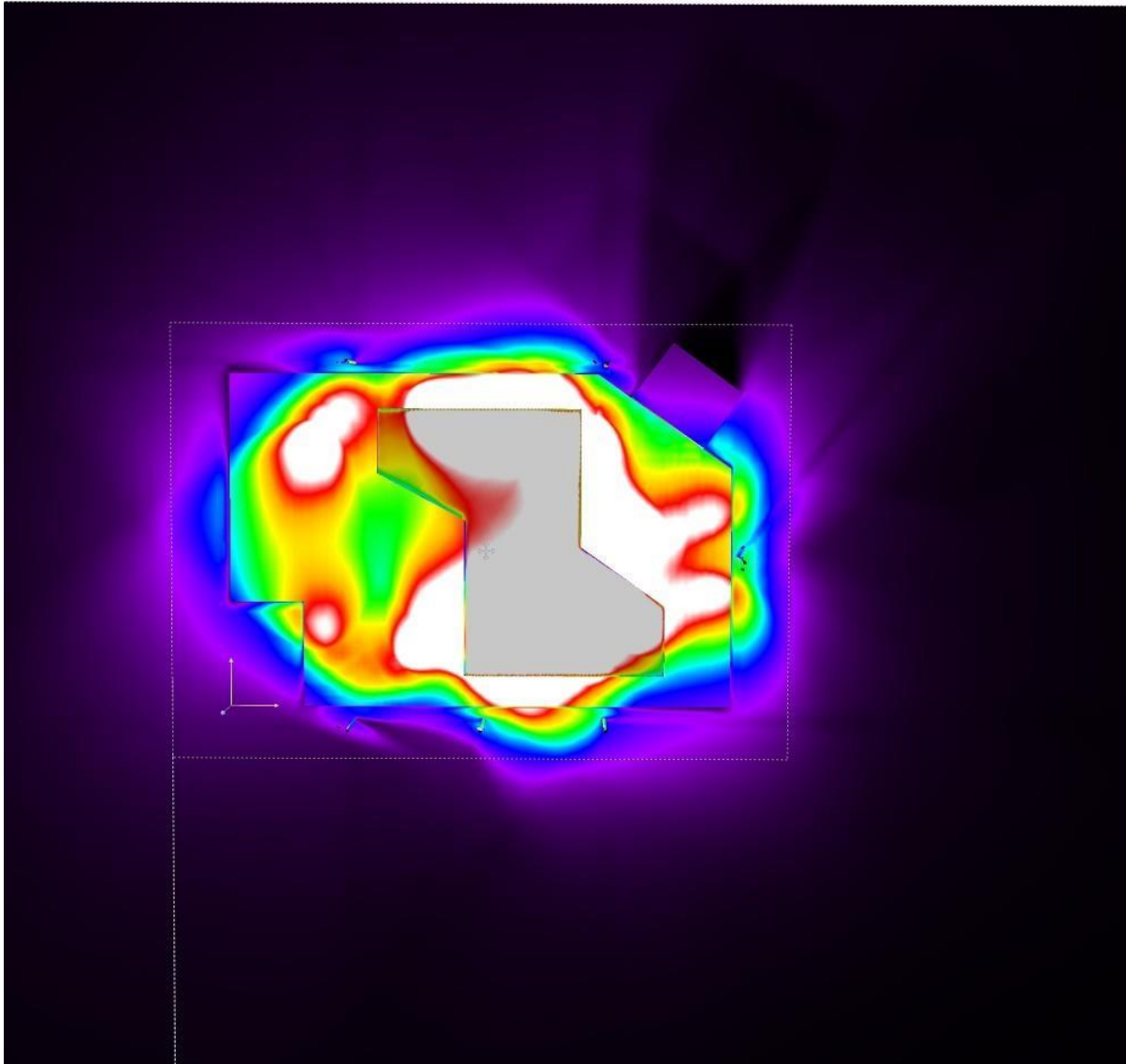
Pool / 3D Rendering



Access Fixtures
40 Jackson St. Worcester, MA

Operator Access Fixtures
Telephone 800-468-9925
Fax
e-Mail Sales@AccessFixtures.com

Pool / False Color Rendering

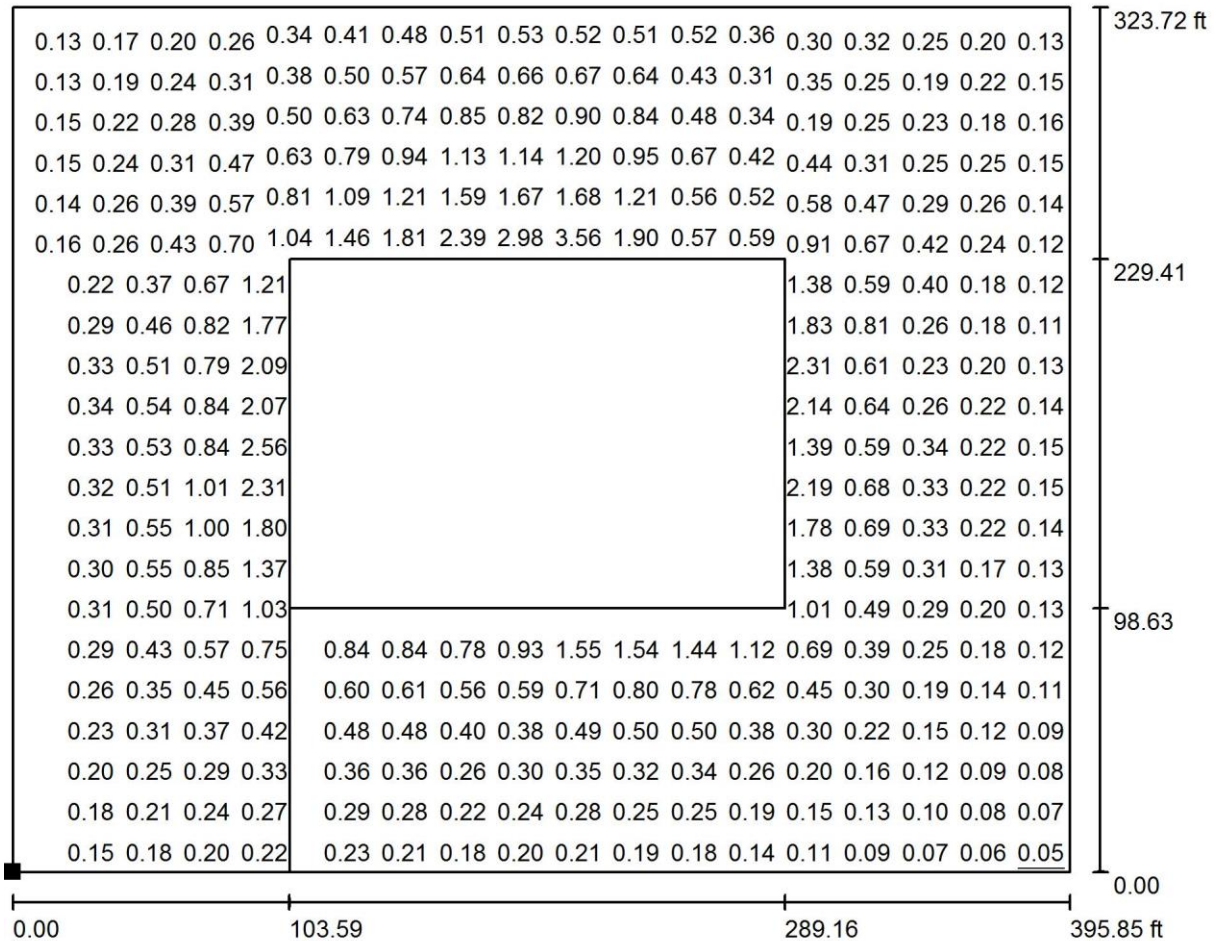


0 3.75 7.50 11.25 15.00 18.75 22.50 26.25 30.00 fc

Access Fixtures
40 Jackson St. Worcester, MA

Operator Access Fixtures
Telephone 800-468-9925
Fax
e-Mail Sales@AccessFixtures.com

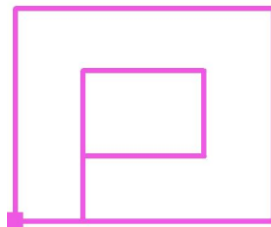
Pool / Calculation surface. Light trespass / Surface 1 / Value Chart (E)



Values in Footcandles, Scale 1 : 863

Not all calculated values could be displayed.

Position of surface in external scene:
Marked point:
(-121.498 ft, -114.569 ft, 0.000 ft)



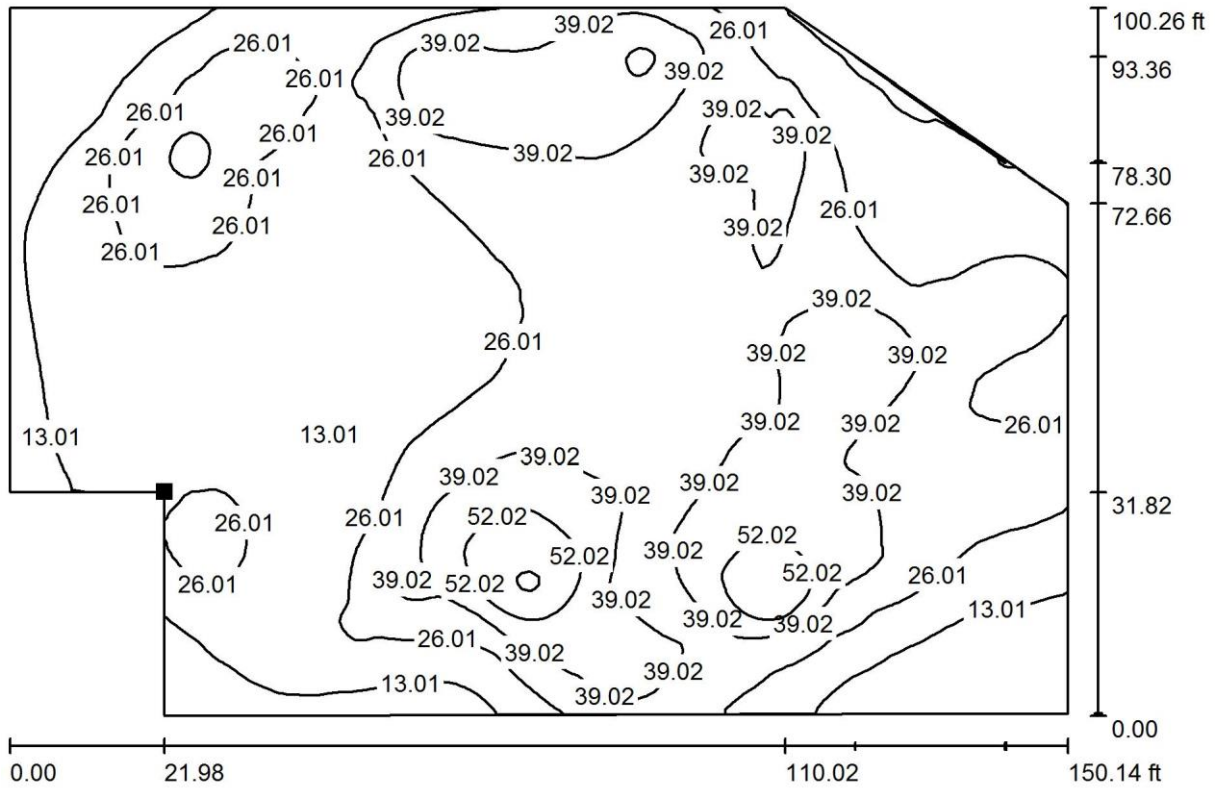
Grid: 128 x 128 Points

E_{av} [fc]	E_{min} [fc]	E_{max} [fc]	u0	E_{min} / E_{max}
0.55	0.05	6.17	0.094	0.008

Access Fixtures
40 Jackson St. Worcester, MA

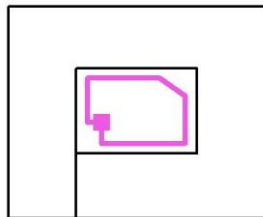
Operator Access Fixtures
Telephone 800-468-9925
Fax
e-Mail Sales@AccessFixtures.com

Pool / Illuminance level whole area / Isolines (E, Perpendicular)



Values in Footcandles, Scale 1 : 328

Position of surface in external scene:
Marked point:
(21.981 ft, 31.496 ft, 0.550 ft)



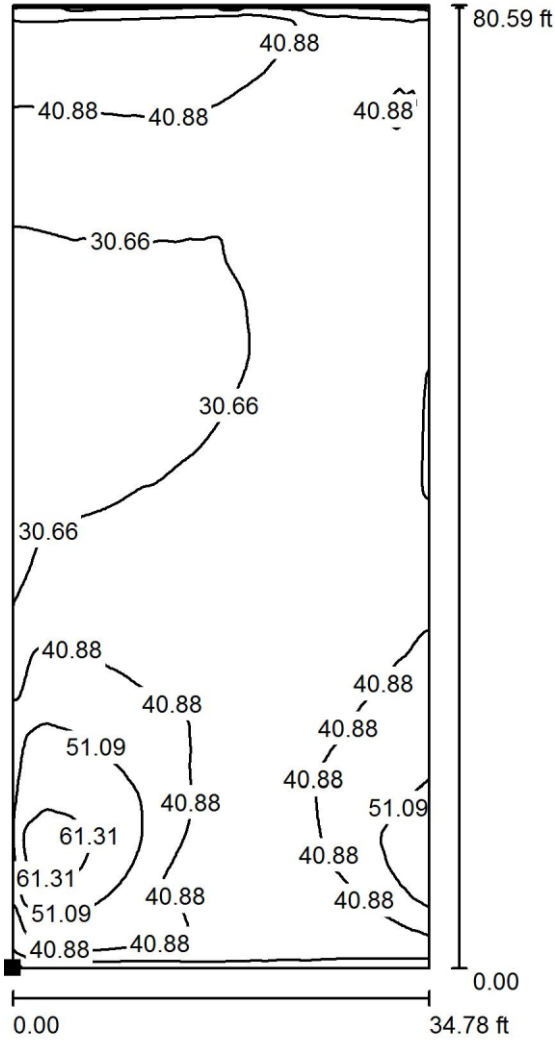
Grid: 128 x 128 Points

E_{av} [fc]	E_{min} [fc]	E_{max} [fc]	u_0	E_{min} / E_{max}
28	3.60	66	0.128	0.054

Access Fixtures
40 Jackson St. Worcester, MA

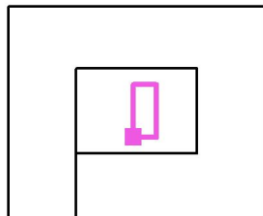
Operator Access Fixtures
Telephone 800-468-9925
Fax
e-Mail Sales@AccessFixtures.com

Pool / Illuminance level only pool / Isolines (E, Perpendicular)



Values in Footcandles, Scale 1 : 193

Position of surface in external scene:
Marked point:
(70.209 ft, 9.186 ft, 0.110 ft)



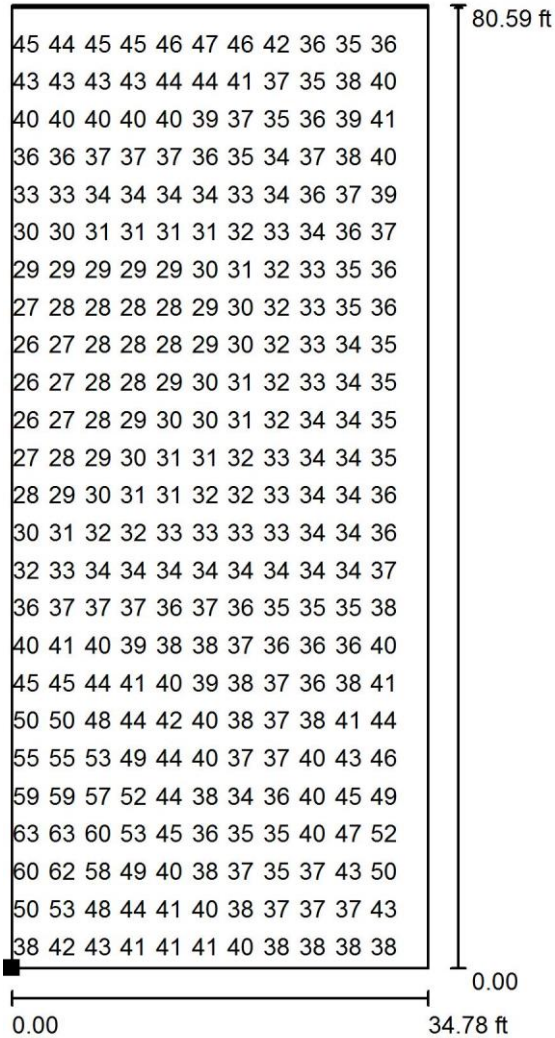
Grid: 128 x 128 Points

E_{av} [fc]	E_{min} [fc]	E_{max} [fc]	u_0	E_{min} / E_{max}
37	16	65	0.433	0.250

Access Fixtures
40 Jackson St. Worcester, MA

Operator Access Fixtures
Telephone 800-468-9925
Fax
e-Mail Sales@AccessFixtures.com

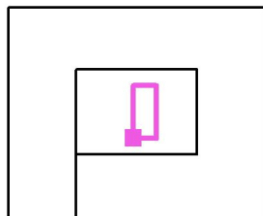
Pool / Illuminance level only pool / Value Chart (E, Perpendicular)



Values in Footcandles, Scale 1 : 193

Not all calculated values could be displayed.

Position of surface in external scene:
Marked point:
(70.209 ft, 9.186 ft, 0.110 ft)



Grid: 128 x 128 Points

E_{av} [fc]	E_{min} [fc]	E_{max} [fc]	u_0	E_{min} / E_{max}
37	16	65	0.433	0.250